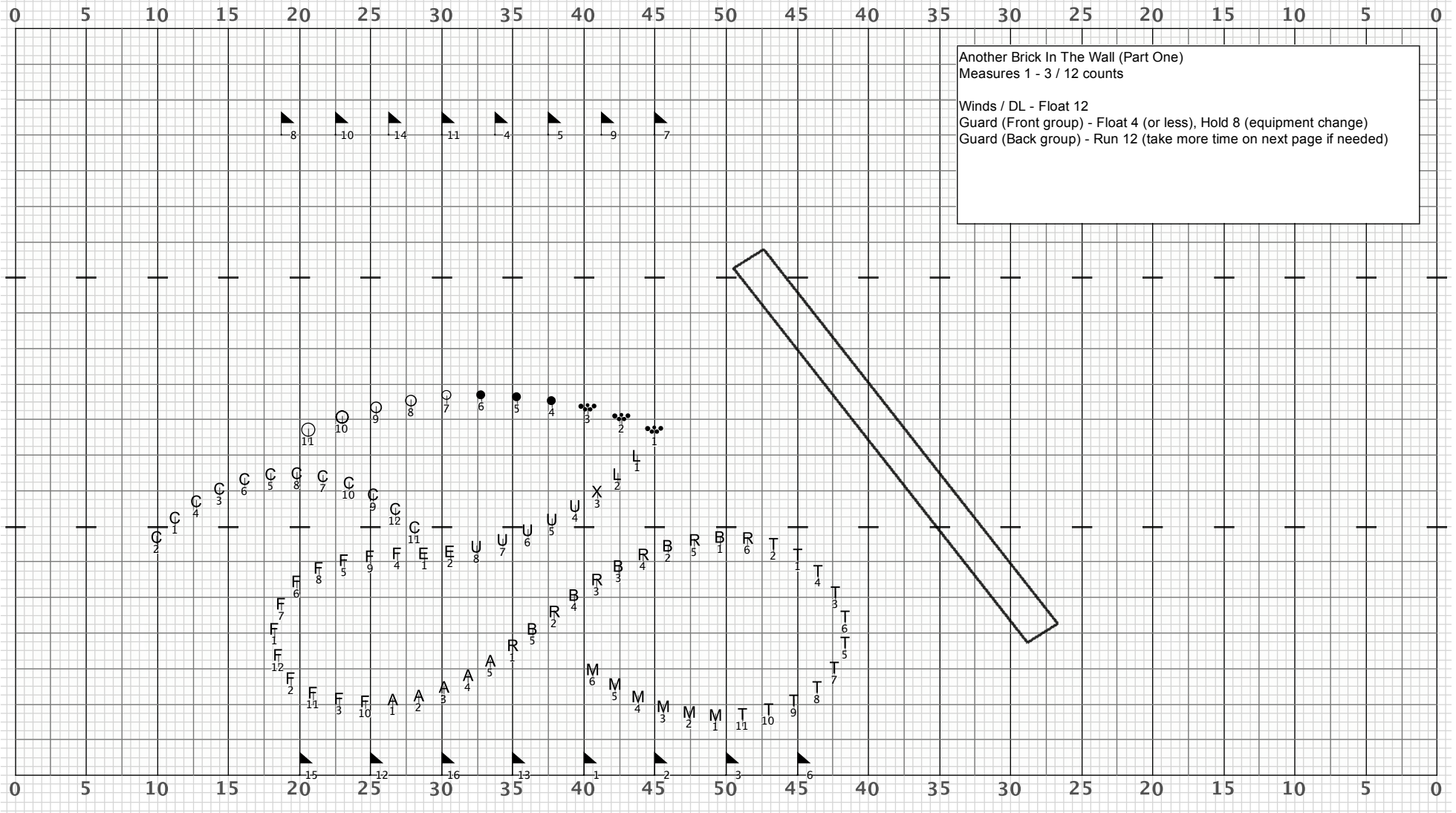


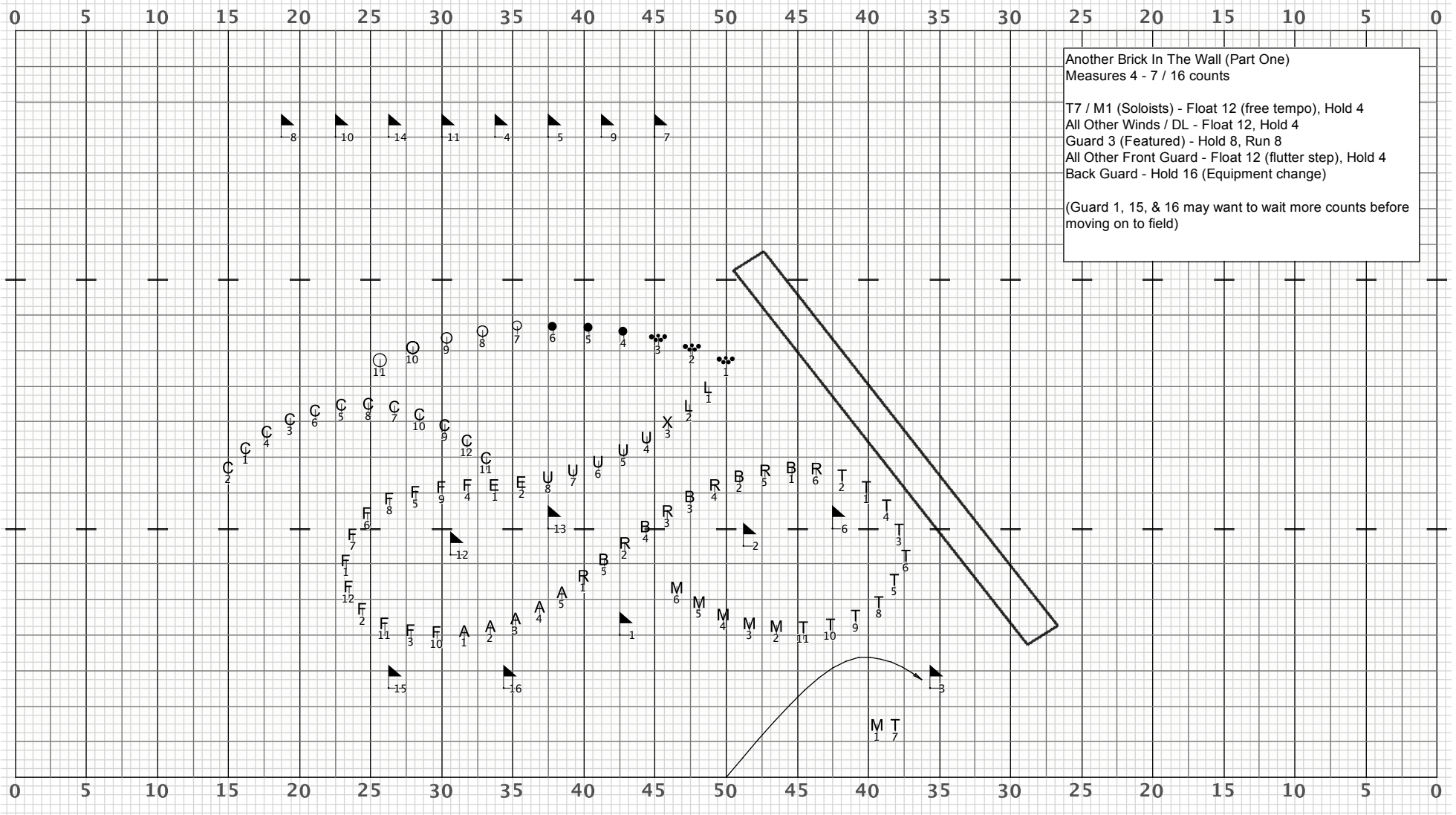
Drill: Another Brick In The Wall (Part One) Set: Another Brick In The Wall (Part One)

Set #1 Count: 12



Another Brick In The Wall (Part One)
 Measures 1 - 3 / 12 counts
 Winds / DL - Float 12
 Guard (Front group) - Float 4 (or less), Hold 8 (equipment change)
 Guard (Back group) - Run 12 (take more time on next page if needed)

Director Viewpoint



Another Brick In The Wall (Part One)
 Measures 4 - 7 / 16 counts

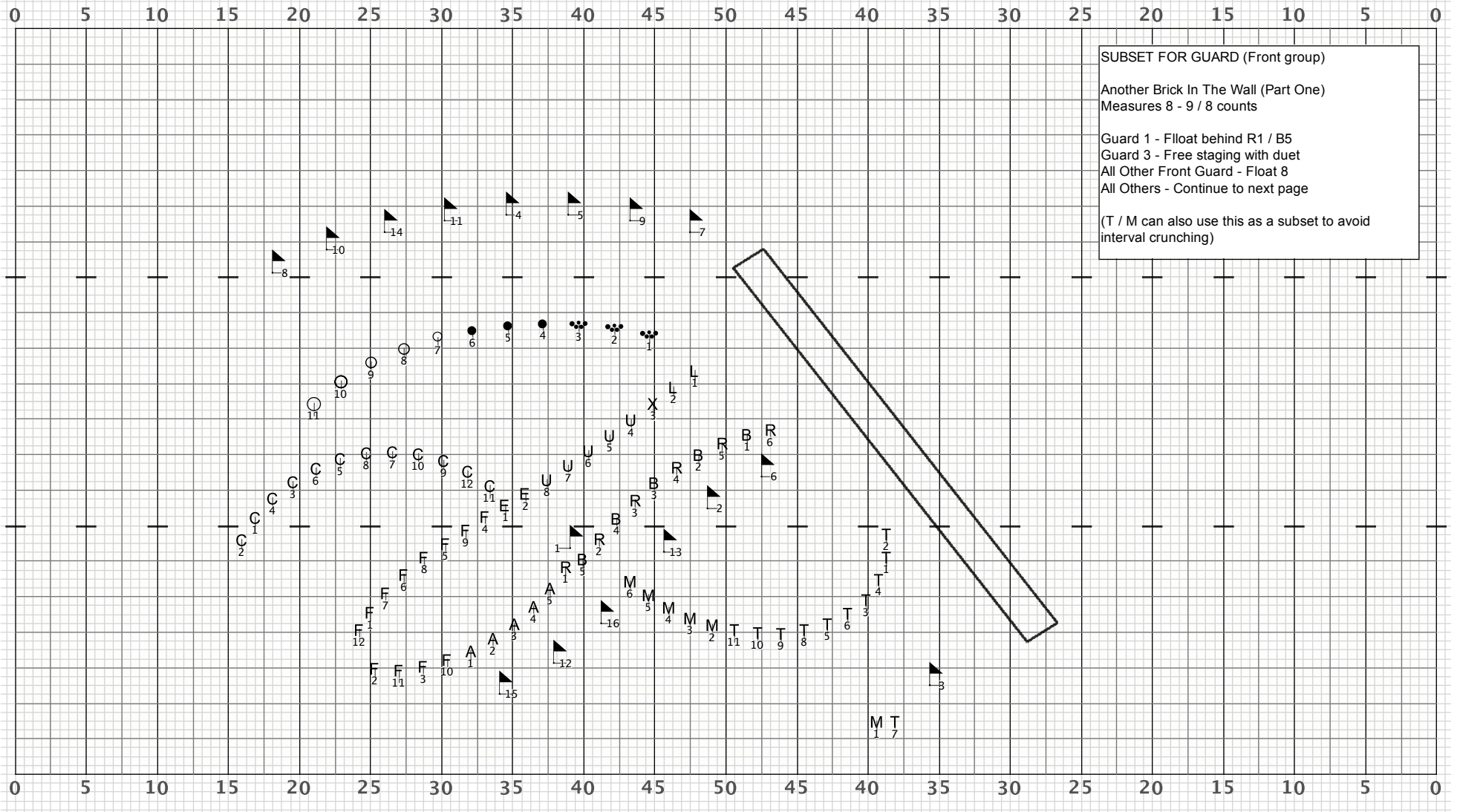
T7 / M1 (Soloists) - Float 12 (free tempo), Hold 4
 All Other Winds / DL - Float 12, Hold 4
 Guard 3 (Featured) - Hold 8, Run 8
 All Other Front Guard - Float 12 (flutter step), Hold 4
 Back Guard - Hold 16 (Equipment change)

(Guard 1, 15, & 16 may want to wait more counts before moving on to field)

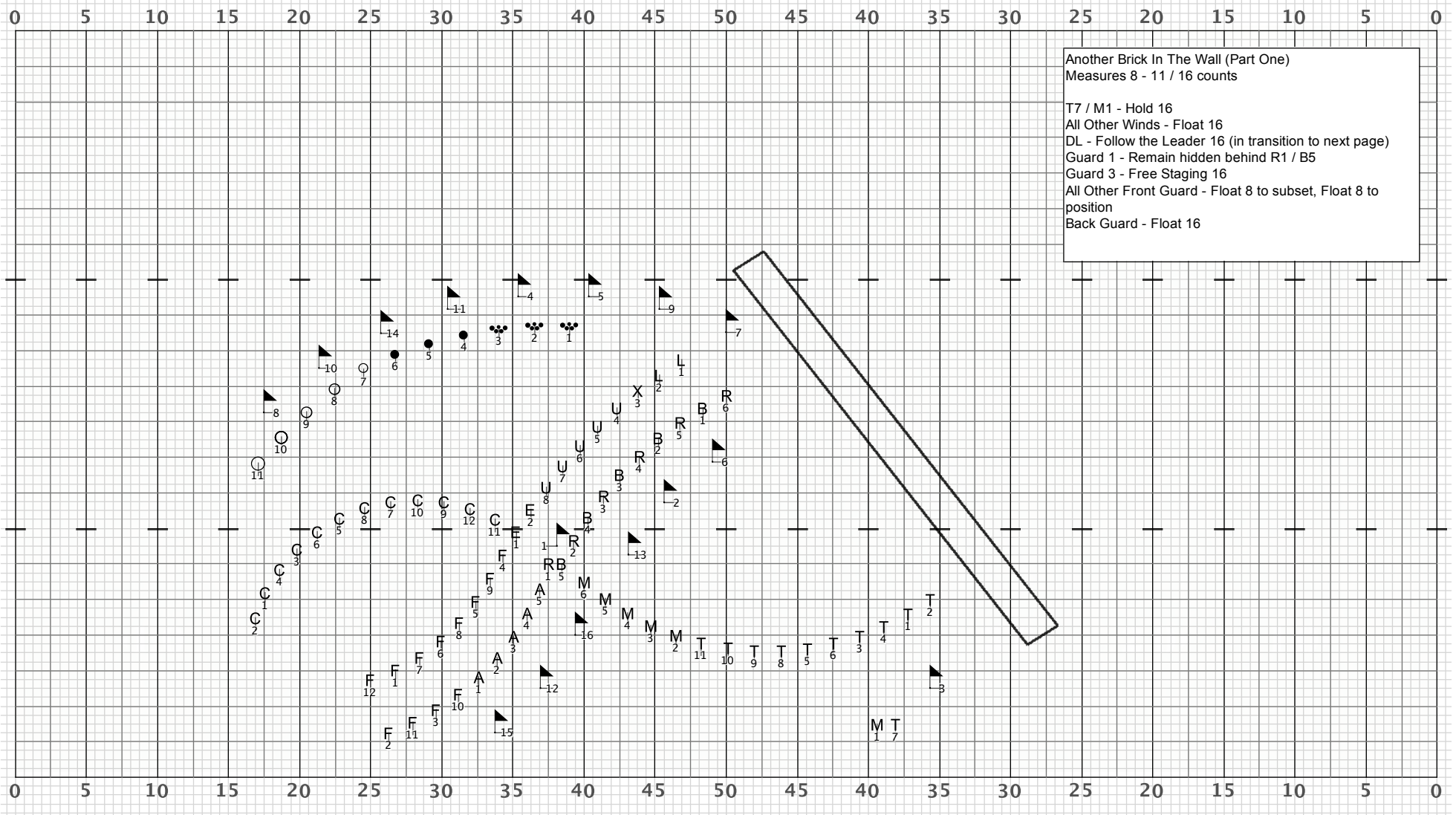
Director Viewpoint

Drill: Another Brick In The Wall (Part One)

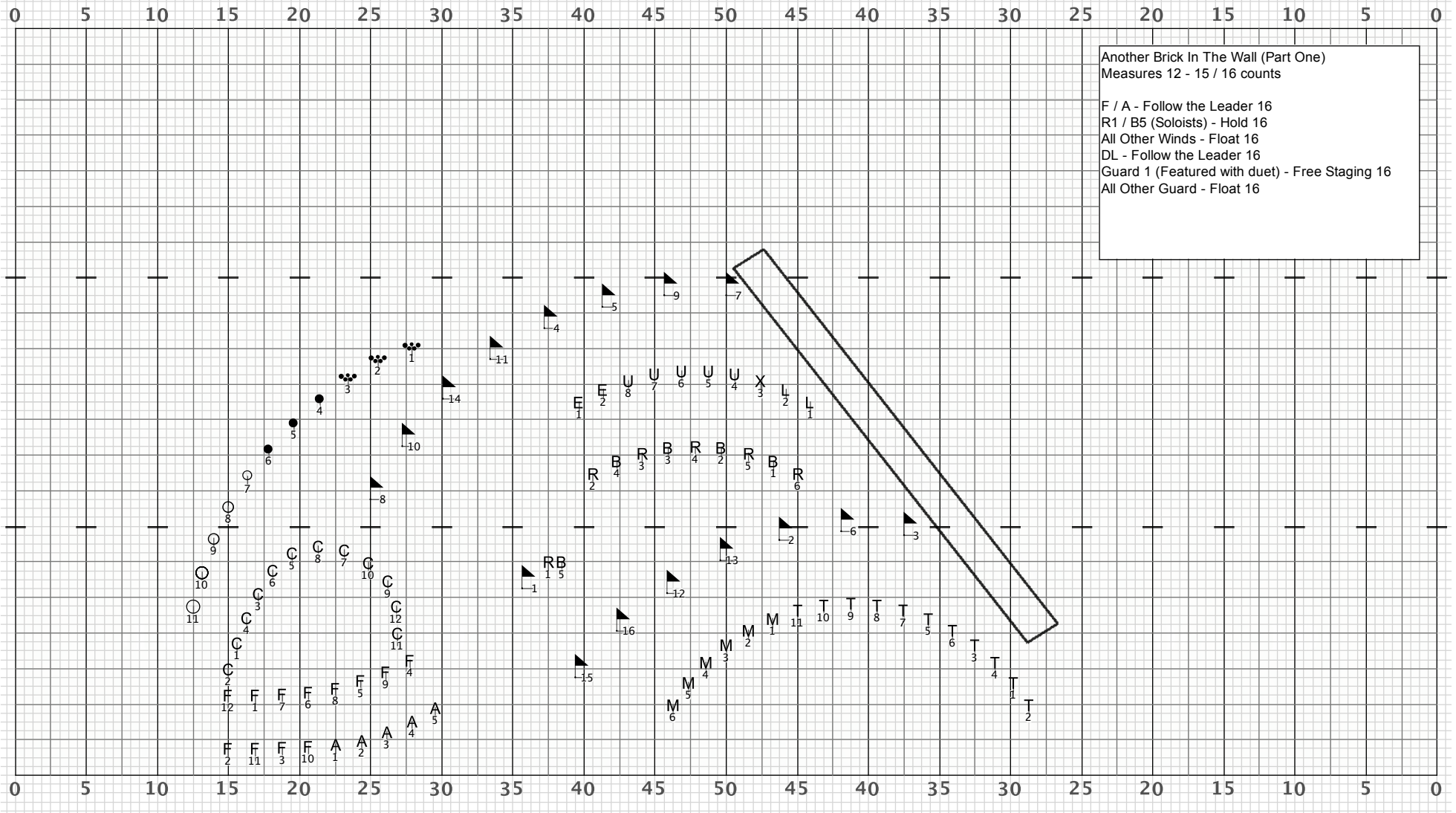
Set #3 Count: 36



Director Viewpoint



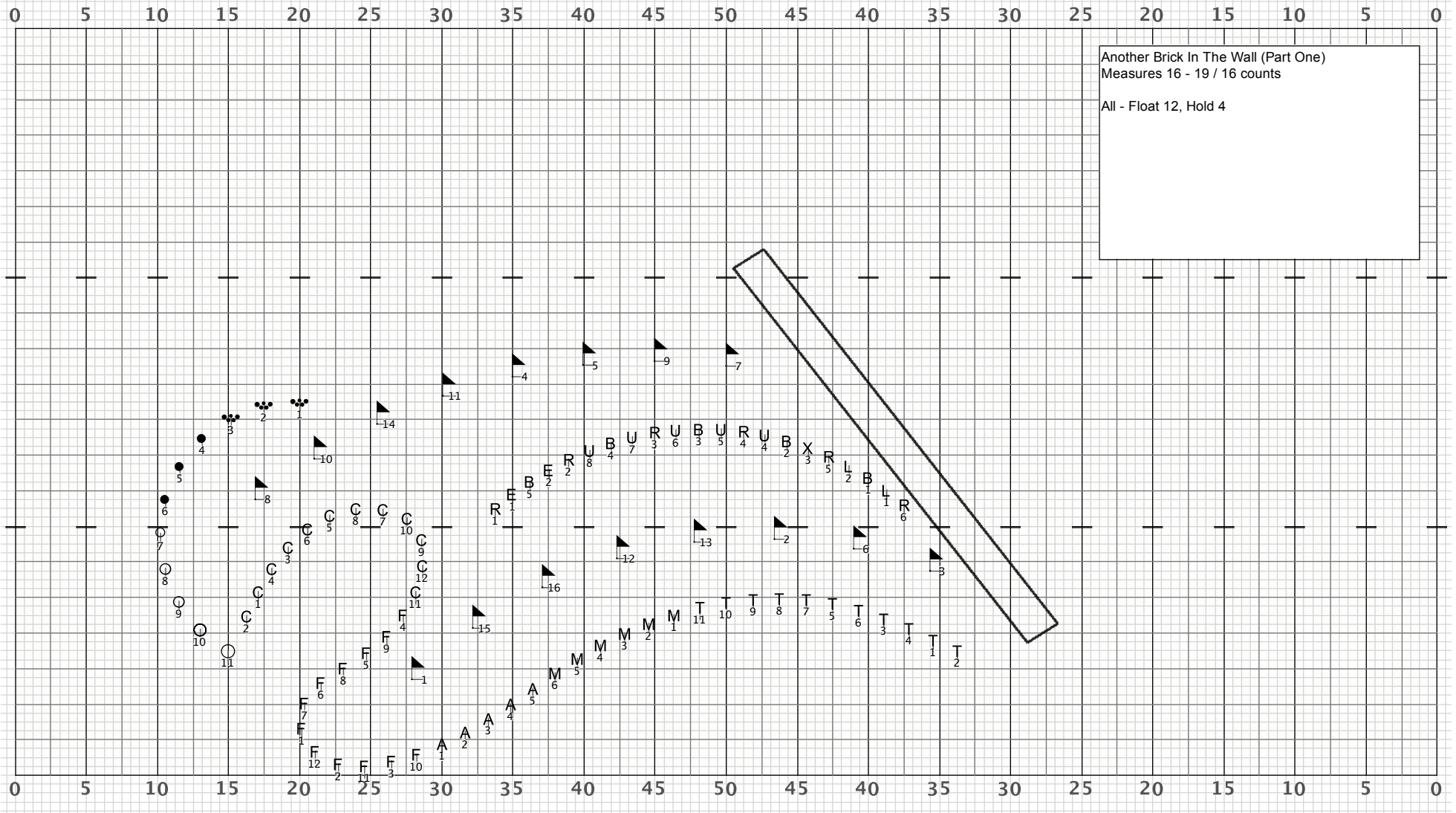
Director Viewpoint



Another Brick In The Wall (Part One)
 Measures 12 - 15 / 16 counts

F / A - Follow the Leader 16
 R1 / B5 (Soloists) - Hold 16
 All Other Winds - Float 16
 DL - Follow the Leader 16
 Guard 1 (Featured with duet) - Free Staging 16
 All Other Guard - Float 16

Director Viewpoint

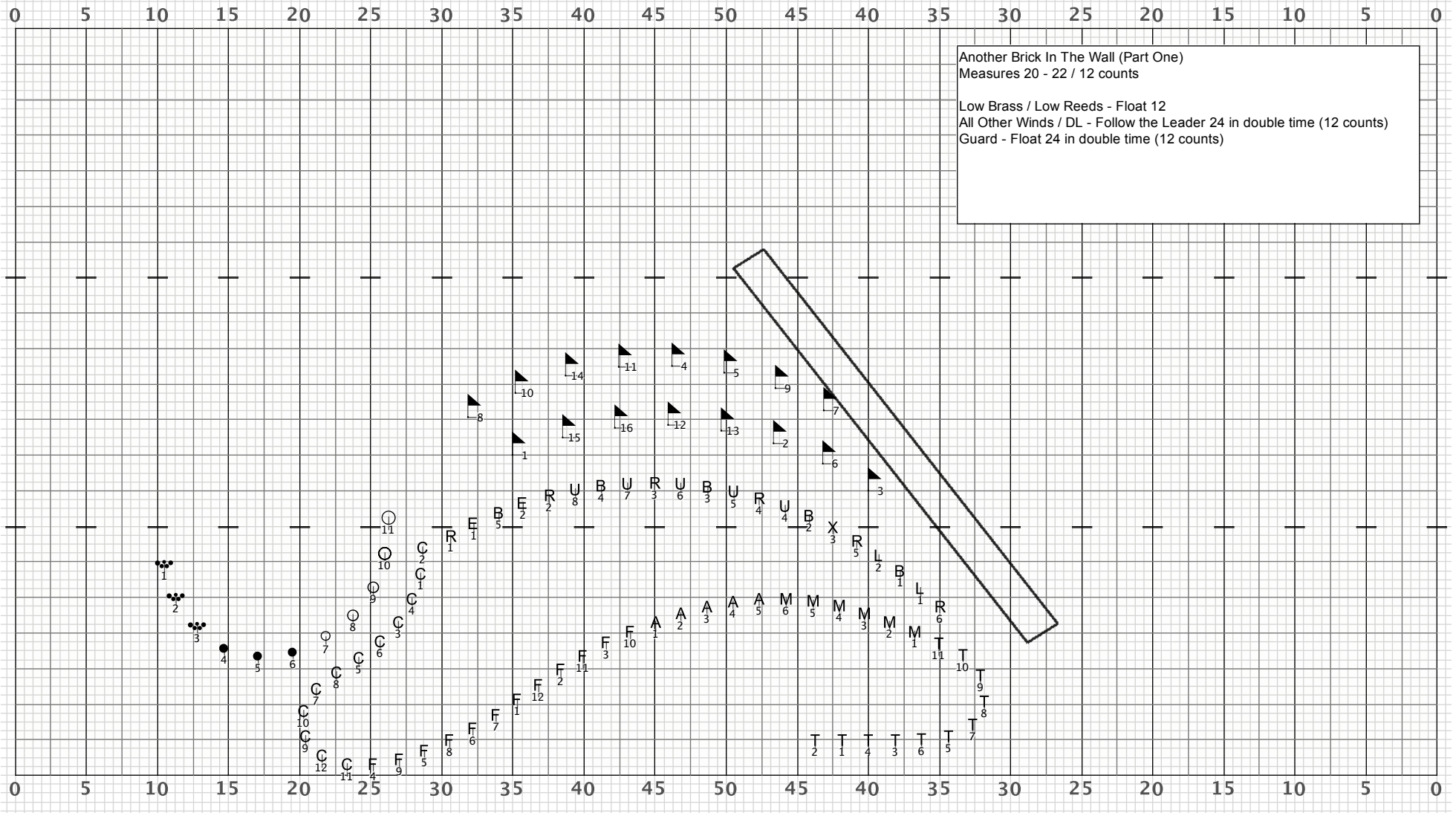


Another Brick In The Wall (Part One)
Measures 16 - 19 / 16 counts
All - Float 12, Hold 4

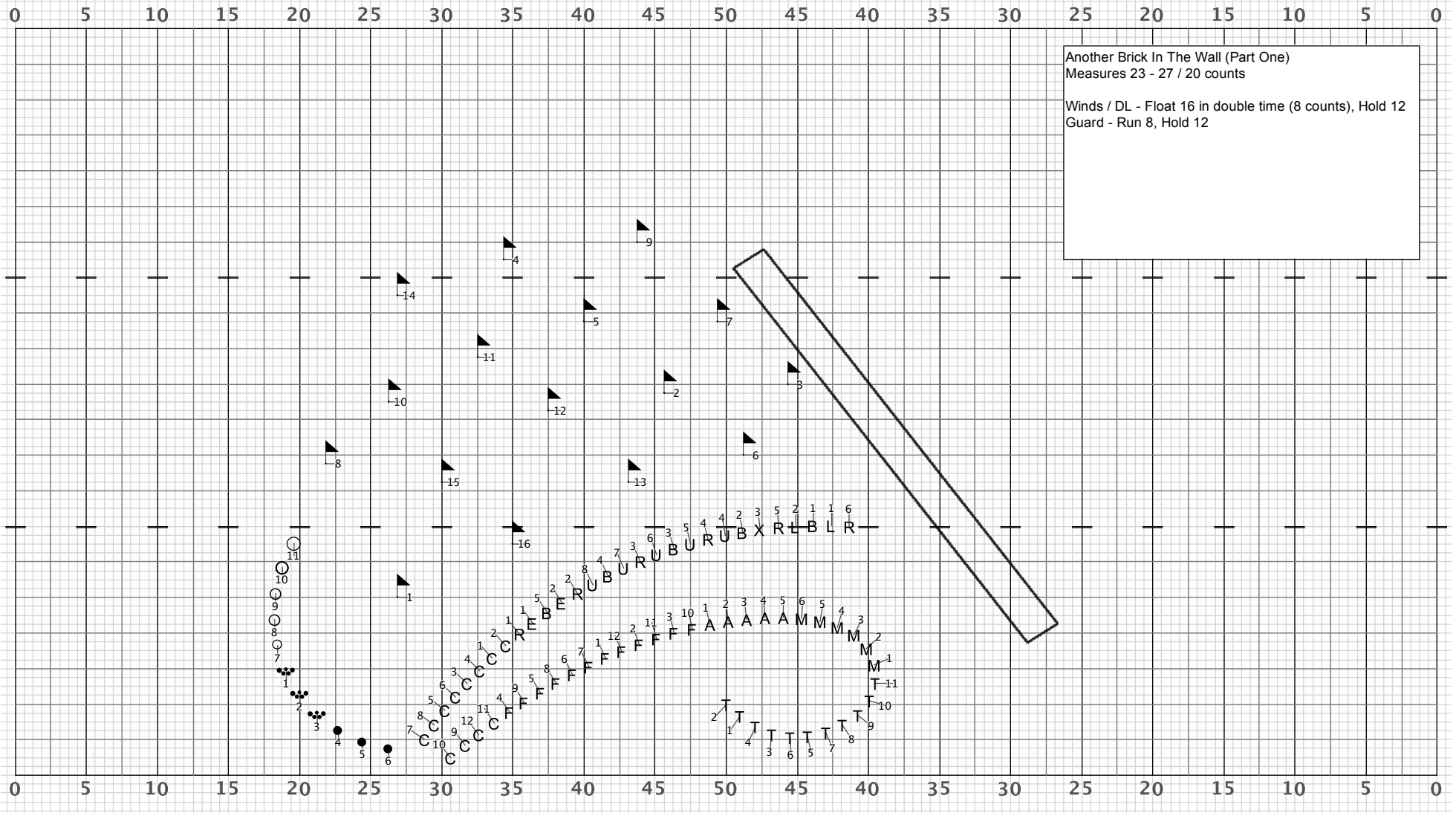
Director Viewpoint

Drill: Another Brick In The Wall (Part One)

Set #7 Count: 88



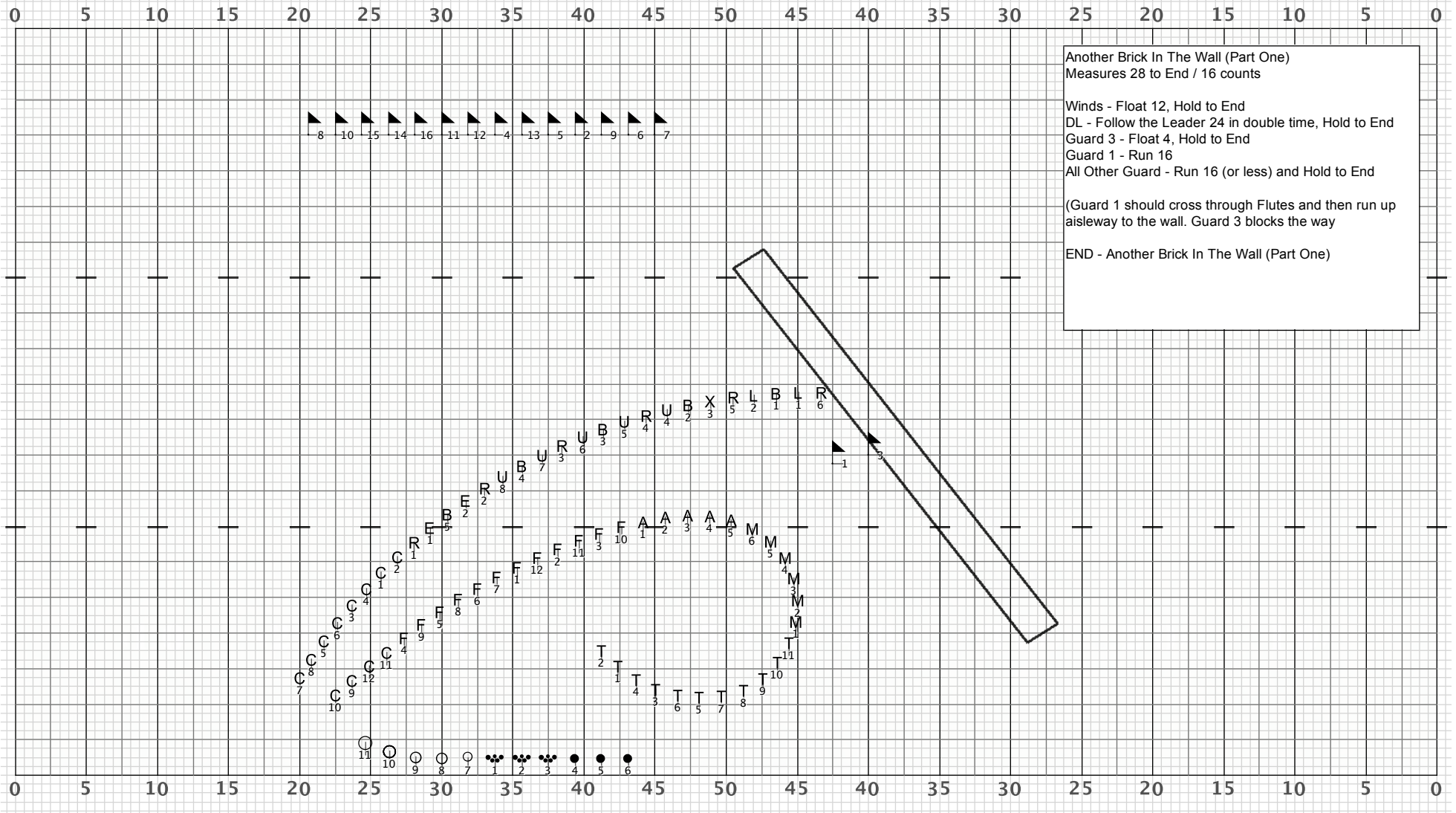
Director Viewpoint



Another Brick In The Wall (Part One)
Measures 23 - 27 / 20 counts

Winds / DL - Float 16 in double time (8 counts), Hold 12
Guard - Run 8, Hold 12

Director Viewpoint



Director Viewpoint